



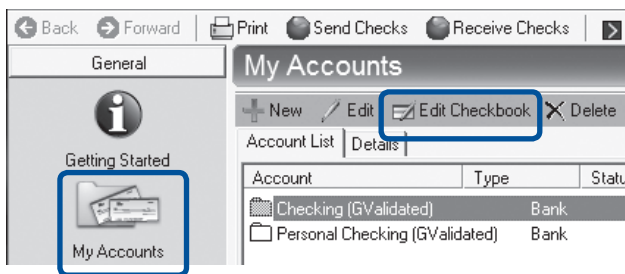
CHOOSING CHECK PATTERNS & COLORS FOR **WHITE CANVAS CHECK PAPER**

And other tips for brilliant custom checks!

STEP 1

From the main VersaCheck screen:

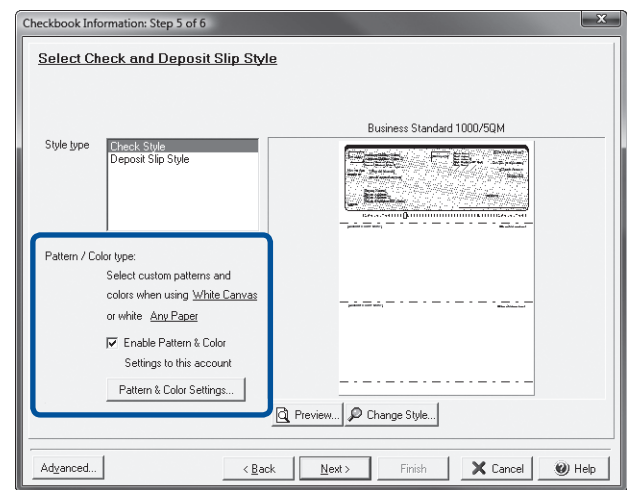
1. Click **'My Accounts'**.
2. Select an account, then click **'Edit Checkbook'**
OR click **'New'** and follow [3] below.
3. Follow the steps of the **'Create New Account'** wizard.
Click **'Finish'** when done & continue to Step 2.



STEP 2

During **'Checkbook Information: Step 5 of 6'**:

1. Click the **'Enable Pattern & Color'** checkbox.
2. Click the **'Pattern & Color Settings...'** button, then choose the check pattern and color you would like for this account.
3. When finished, click **'OK'** then **'Next'** and **'Finish'** to complete the **'Checkbook Information'** wizard.



STEP 3

When printing checks the final print screen will display check paper choices.

1. Under **'Paper Options'** choose **'White Canvas Check Paper'**.

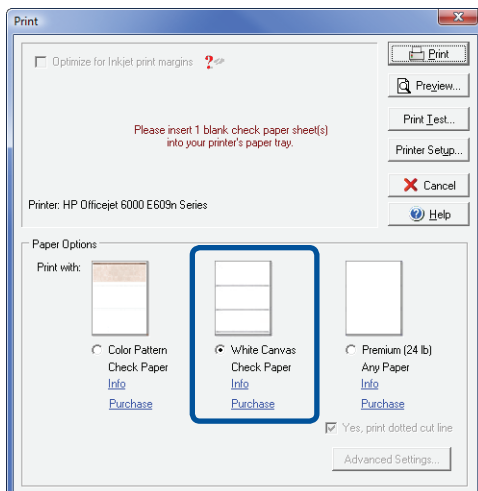


IMAGE & PRINTING TIPS

- Guidelines for adding custom background images:
 - Ideal Business size: 8.06" wide x 2.88" high
 - Ideal Personal size: 5.72" wide x 2.22" high
 - Ideal image opacity: 40%
- Save signature images in **'transparent'** GIF format to remove white image backgrounds.
- If your printer clips your check graphics, please adjust top and bottom positions using the **'Print Test'** button in the final print screen. To reduce the left and right positions, please choose **'Reduced check pattern width'** in the **'Advanced Settings...'** screen in the final print screen.
- For black laser printing we suggest using the **'Q Classic'** check pattern and a dark grey color.

Canvas Guide Rev.08/12

To download the latest program and check pattern updates:
Click on the **'Help'** menu item and select **'Download the Latest Program Update'**.